

DATA SHEET

PRODUCT DESCRIPTION

The CAR2P-MNF trolley is designed to offer maximum comfort and reliability, thanks to its innovative design and guaranteed quality. This device is intended for the support and movement of medical and electromedical equipment, and is characterized by exceptional versatility and an unbeatable quality-price ratio. The load-bearing structure is made of solid epoxy powder coated steel, treated in a thermal tunnel at 200°C, to ensure resistance and durability over time.

TECHNICAL FEATURES

ELEMENT(S).	DESCRIPTION
SHELF(S).	No. 1 Adjustable height furniture shelf according to needs Dimensions: 400 x 360 mm
COLUMN(S).	Material: Extruded aluminum
BASE	Solid base in painted steel tubes, equipped with ABS bumper caps for optimal protection. Base (Useful area): 510x560 mm
BASKET	Material: Metal wire
WHEELS	Diameter: Ø80 mm Equipped with two front brakes to ensure stability and safety during use, while facilitating convenient movement of the unit.
OPTIONAL	Fully versatile trolley with the possibility of being equipped with various accessories: Probe holder; Basket; Cable holder arm; 3rd shelf
PAINTING	Painted with epoxy-polyester powders in a thermal tunnel. Colour: peeled grey (RAL7035) scratch-resistant (possibility of further colours to choose from)



FUNCTIONAL FEATURES

Base

-Solid structure in painted steel sheet, designed to avoid any overturning on which the aluminium support bars are screwed using screws, the four wheels with bumpers are positioned in the lower part.

-Plastic caps are placed at the ends of the bars to act as bumpers.

Composition

- Base in painted steel sheet, overall dimensions 55x46 cm
- Nr.2 Shelves in painted steel sheet measuring 40x36 cm, adjustable in height
- Four wheels Ø mm. 80, the front ones are complete with double action brake
- Single shelf load capacity = 30Kg
- Total height = 104 cm
- Maximum total load = 40 kg

Wheels

Support	Polyamide
Pirouetting	on a double row of spheres
Band	in black antistatic/conductive and non-marking rubber
Core	Polyamide
Diameter	80 mm
Flow rate	50 kg each, in case of dynamic load.
Front wheels	with double action brake (simultaneous blocking of swiveling and rolling)
Fixing	fixing to the base with a snap-on system

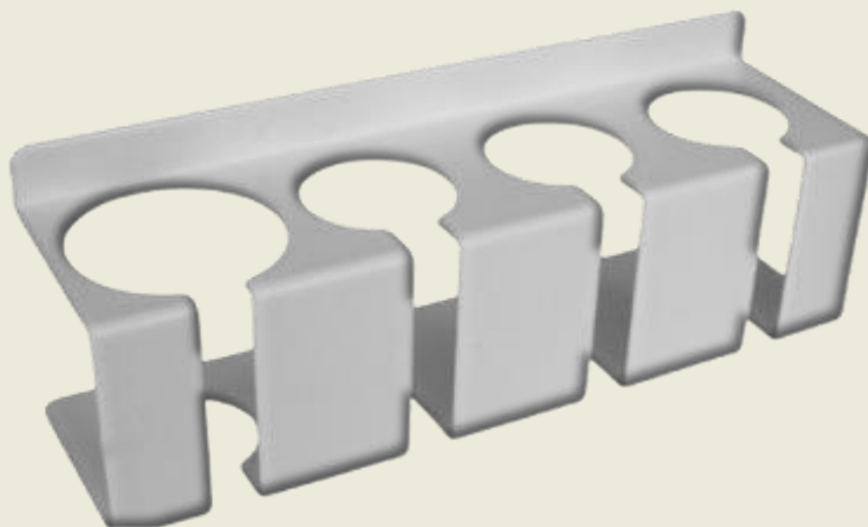
FUNCTIONAL FEATURES

Uprights

No. 1 upright firmly fixed to the base of the trolley by two screws each M10x50 in galvanized steel. The upright includes 2 tracks (slots) in the longitudinal direction, these tracks are used to fix the shelves. The bars have longitudinal gaps that allow the arrangement of the various cables present in the machine system. Treatment with epoxy paint finish in thermal tunnel

Accessories

The trolley is equipped with a plasticized lateral probe holder with four positions



FUNCTIONAL FEATURES

Conforme al Regolamento (UE) 2017/745 sui Dispositivi Medici di classe I

CUSTOM SOLUTIONS



Scan To Visit Our Website

To visit our websites, open your phone's camera app and scan the QR code below,
www.kartmedsolutions.com

